

Operating Instruction of the *ATMION*TM Service Programme

The *ATMION*TM Service Programme is supplied for simple tests and service of the *ATMION*TM Wide Range Manometer. It can be downloaded free of charge from <http://www.vacom.de>.

The service programme supports all RS 232 commands of the *ATMION*TM Wide Range Manometer. For running the *ATMION*TM System with a PC, the input of the power supply and the RS 232 interface have to be separated. This can be easily done by taking the optionally available PC adapter and a modem cable.

Set-up of the PC interface

After having installed the *ATMION*TM Service Programme “*atmion-4.exe*“, the programme starts with page **COM-Anschluß-Einstellungen** (Interface set-up). The interface of the PC (☞ **Figure 1**) has to be selected and the baud rate has to be set to the baud rate of the *ATMION*TM Controller (☞ **Manual *ATMION*TM Wide Range Manometer**). „OK“ continues the programme. It opens the main page **ATMION-Monitor** (☞ **Figure 2**).

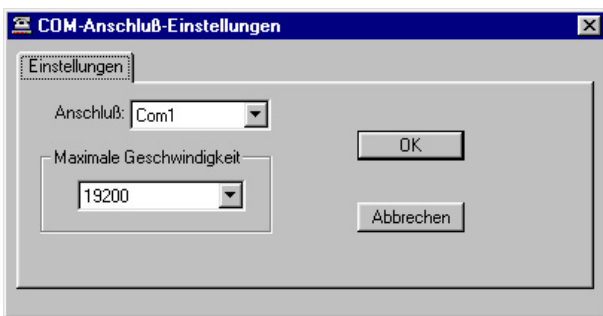


Figure 1 – Set-up of the COM interface

Operating the *ATMION*TM Wide Range Manometer

On the main page **Monitor für *ATMION*** (☞ **Figure 2**) of the service programme commands can be entered and the status of the *ATMION*TM Wide Range Manometer is shown.

Control Section „Steuern *ATMION*“

The 13 most important control bits (☞ **Manual *ATMION*TM Wide Range Manometer**) can be activated by mouse click. The software prevents impossible combinations. A click on “**Steuerwort senden**“ sends the command to the *ATMION*TM Controller.

Status Section „Status *ATMION*“

All 16 status bits (☞ **Manual *ATMION*TM Wide Range Manometer**) are shown. Grey letters indicate deactivation, black letters indicate active states. The display of the test bit of the *ATMION*TM is blinking green while data transmission.

The measured pressure is shown in the line indicated „Druck“.

Command Section „Befehl“

Read and write commands (☞ **Manual ATMION™ Wide Range Manometer**) can be entered here. A mouse click on **“Senden“** sends each command to the **ATMION™** Controller.

Send Section „Monitor Senden“

This section shows all sent commands and sent control bits.

Read Section „Monitor Empfang“

This section shows the data resent by the **ATMION™** Controller. A click on **“Start“** starts the data transmission every 500 ms. These data are stored in file **C:\atmionlog.txt** and can be used for further evaluation. A click on **“Stop“** stops the data output.

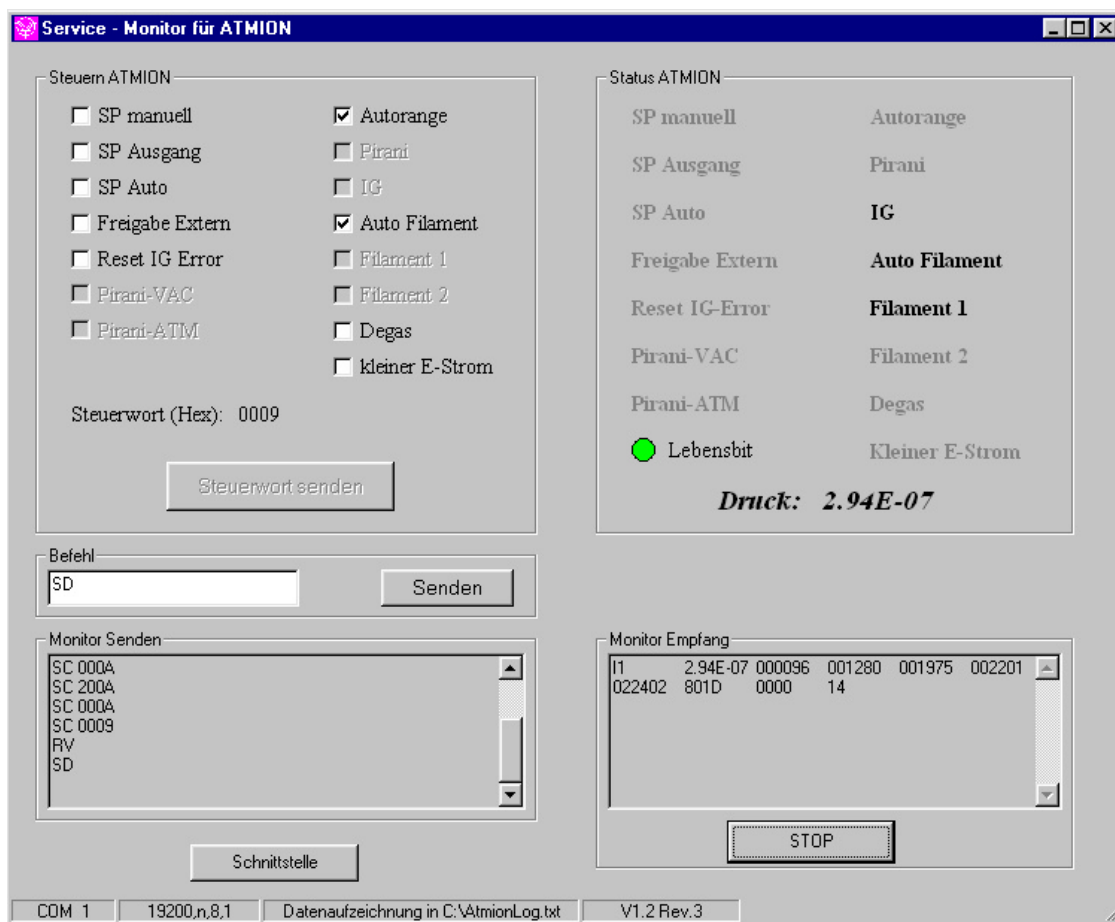


Figure 2 – Programme page “ATMION™ - Monitor“

Interface Section „Schnittstelle“

It is possible to return to the PC interface page **COM-Anschluß-Einstellungen** by mouse click on **“Schnittstelle“**.